

# Product datasheet



## sHLA-C\*16:01bio

Cw\*16:01, Cw\*1601, C\*1601, C1601  
Cw1601, C\*16, C16, Cw\*16, Cw16, -

<b>Serological Name</b>	-
<b>Peptide Load</b>	Endogenous
<b>Modification</b>	Unmodified
<b>Conjugation</b>	Biotin
<b>SKU</b>	C1601bio

### Product Description

<b>Allele Name</b>	C*16:01 B2m
<b>HLA Class</b>	HLA Class I
<b>HLA Gene Locus</b>	HLA-C
<b>Alternative Allele Name A Chain</b>	Cw*16:01, Cw*1601, C*1601, C1601, Cw1601, C*16, C16, Cw*16, Cw16, -
<b>Alternative Allele Name B Chain</b>	-
<b>Description</b>	Recombinant, truncated Class I soluble Human Leukocyte Antigen (sHLA), naturally folded and glycosylated, loaded with endogenous peptides.
<b>Serological Name</b>	-
<b>Serological Split</b>	-
<b>Bw4/Bw6 Assignment</b>	Bw6
<b>Bw4/Bw6 Sequence</b>	SLRNLRG
<b>Allele Frequency [World Population]</b>	
<b>A chain</b>	3.4%
<b>B chain</b>	-

### Associated products

[C1601](#)  
[C1601pe](#)

## Product Specification

<b>Product name</b>	HLA-C*16:01bio
<b>HLA Species</b>	Human
<b>Host Cell Line Species</b>	Human
<b>Clone Designation</b>	G10G4
<b>Tail Specification</b>	VLDL
<b>Peptide Load</b>	Endogenous
<b>Modification</b>	Unmodified
<b>Conjugation</b>	Biotin
<b>Complexity</b>	Monomer
<b>Protein Format</b>	Recombinant, truncated, soluble, non-modified, biotinylated, endogenously loaded
<b>Storage Temperature</b>	4 °C (This product should be stored undiluted)
<b>Form</b>	Liquid
<b>Concentration</b>	300.0 µg/µl
<b>Formulation</b>	PBS/0.02% Sodium Azide
<b>pH</b>	7.4
<b>Purification Method</b>	Affinity Chromatography
<b>Grade</b>	Research Use Only [RUO]
<b>Authentication Verification</b>	Sequence Based Typing

## Protein Sequences

<b>Alpha Chain Sequence</b>	CSHSMRYFYT AVSRPGRGEP RFIAVGYVDD TQFVRFSDSA ASPRGEPRAP WVEQEGPEYW DRETQKYKRQ AQTDRVSLRN LRGYYNQSEA GSHTLQWMYG CDLGPDRLL RGYDQSAYDG KDYIALNEDL RSWTAADTAA QITQRKWEAA RAAEQRAYL EGTTCVEWLR R YLENGKETLQ RAEHPKTHVT HHLVSDHEAT LRCWALGFYP AEITLTWQRD GEDQTQDTEL VETRPAGDGT FQKWAAVVVP SGEEQRYTCH VQHEGLPEPL TLRVSVSTDD DLA
<b>Beta Chain Sequence</b>	IQRTPKIQVY SRHPAENGKS NFLNCYVSGF HPSDIEVDLL KNGERIEKVE HSDLSFSKDW SFYLLYYTEF TPTEKDEYAC RVNHVTLSPQ KIVKWDRDM

## Related Products

[A0201bio](#)  
[A0301bio](#)  
[A2402bio](#)  
[B0702bio](#)

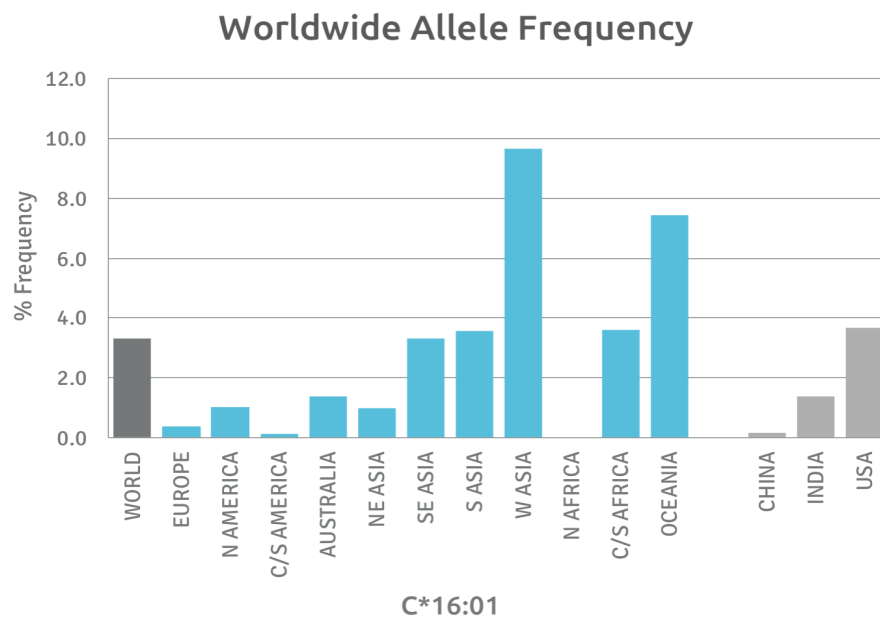
## Applications

- HLA Sandwich ELISAs
- HLA Direct ELISAs
- HLA-Sera Antibody Assays
- HLA Controls in ELISA Assays
- HLA Assay Standards
- HLA Blocking Assays
- HLA Neutralizing Assays
- HLA Competition Assays
- HLA Bead Assays
- HLA Immunization Procedures

## Recommended Antibodies

- W6/32
- Anti-B2m

## Allele Frequency



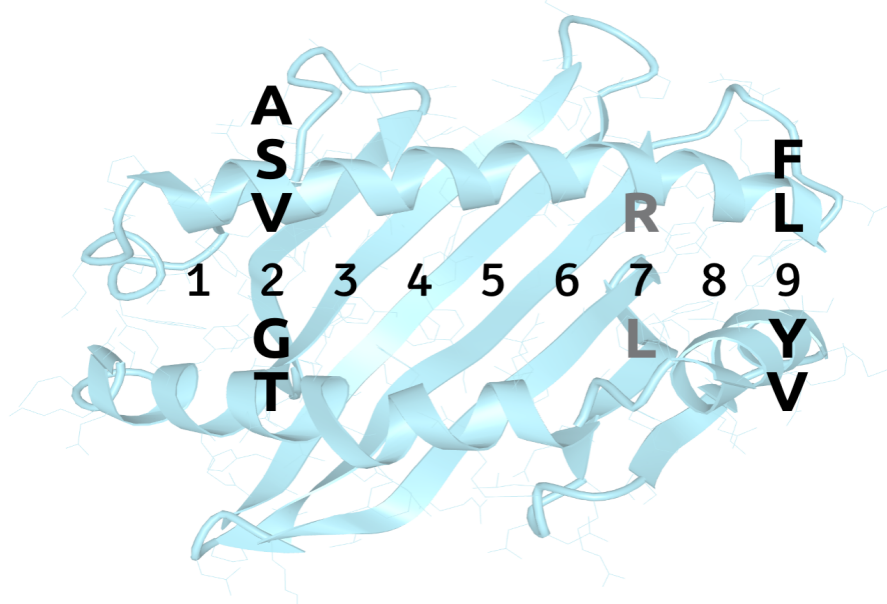
**Please note:**  
ALL PRODUCTS ARE FOR RESEARCH USE ONLY. NOT FOR COMMERCIAL USE IN DIAGNOSTIC PROCEDURES.  
For more information, please visit our [Policies](#) section on our website. For licensing inquiries, please contact

[licensing@hlaprotein.com](mailto:licensing@hlaprotein.com)



## Motif

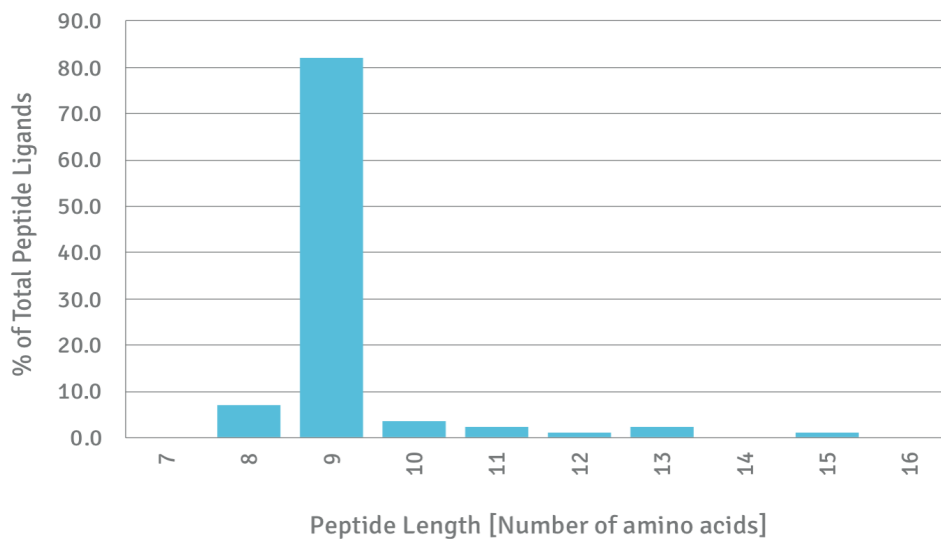
### C\*16:01 BINDING MOTIF



## Length Distribution

### HLA Length Distribution

**C\*16:01**



Please note:

ALL PRODUCTS ARE FOR RESEARCH USE ONLY. NOT FOR COMMERCIAL USE IN DIAGNOSTIC PROCEDURES.

For more information, please visit our Policies section on our website. For licensing inquiries, please contact

[licensing@hlaprotein.com](mailto:licensing@hlaprotein.com)

